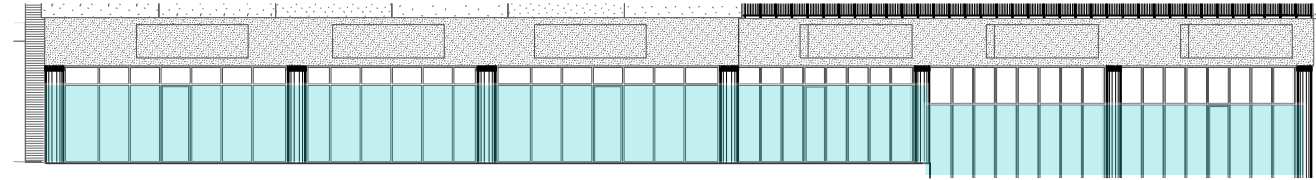


6'-10" FROM BASE OF WINDOW TYP.

11 BLDG. 1A-1B (ELEV 1)

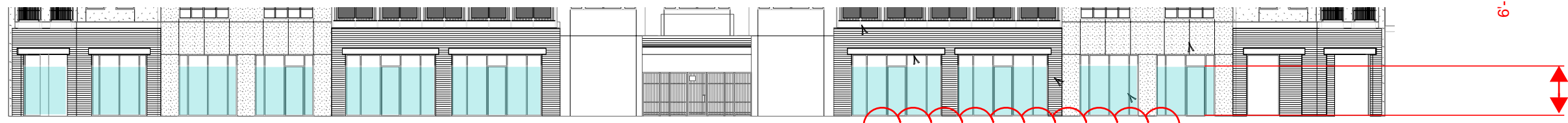


12 BLDG. 1A-1B (ELEV 2)



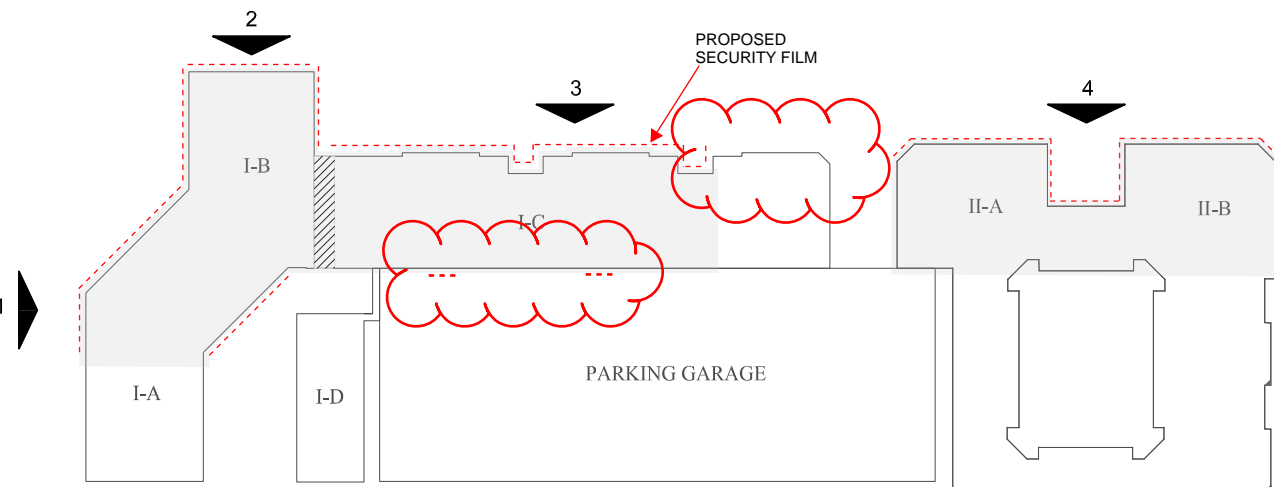
6'-10" FROM BASE OF WINDOW TYP.

13 BLDG. 1C (ELEV 3)



6'-10" FROM BASE OF WINDOW TYP.

14 BLDG. 2A-2B (ELEV 4)



15 BLDG. 2A-2B (ELEV 4)

**GENERAL NOTES:**  
 G.C. TO PROVIDE SCOTCHSHIELD  
 ULTRA SAFETY AND SECURITY  
 WINDOW FILM. SCLARL150. G.C. TO  
 EXTEND FROM BASE OF WINDOW  
 UP 6'-10". APPLY TO PERIMETER  
 GLASS OF SUITES 1A-1B, 1C, 2A, 2B.  
 INCLUDE ALL VESTIBULES  
 PRICE CLEAR AND TINTED FILM.  
 TENANT TO APPROVE FROM  
 STANDARD COLOR OPTIONS SAMPLES.

G.C. TO VERIFY BUILDING LENGTH  
 IN FIELD. NOTE: ALL ELEVATIONS  
 NOT SHOWN.